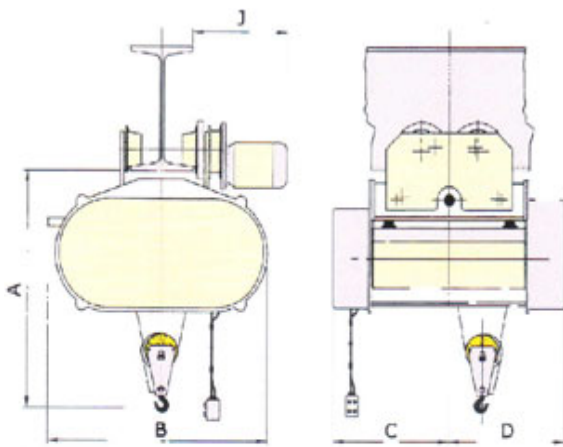
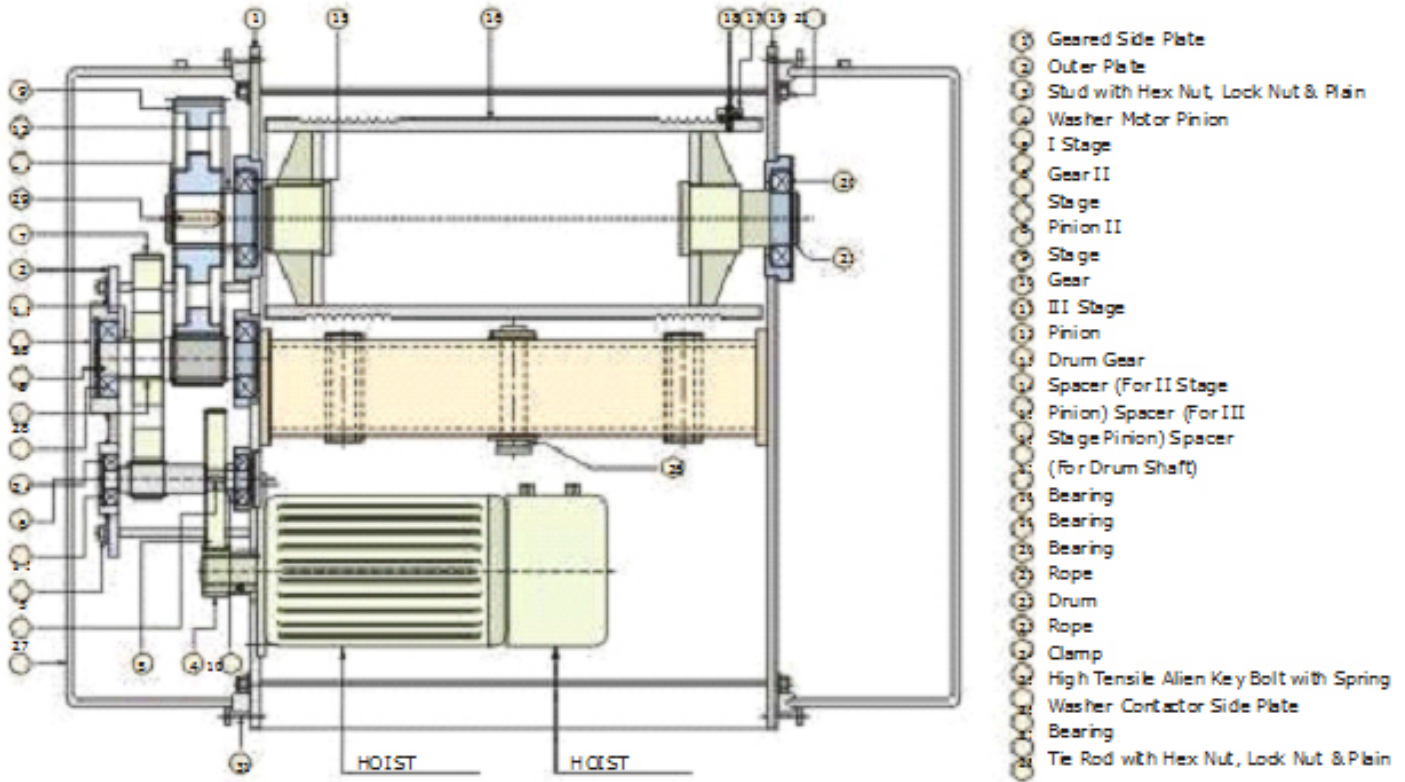
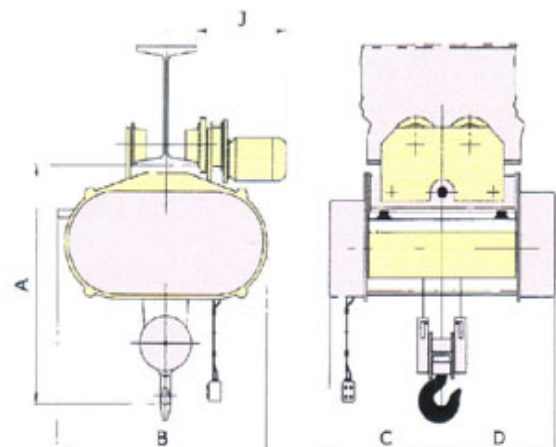


## Electric Wire Rope Hoist



2 FALL ARRANGEMENT WITH POWER TROLLEY



4 FALL ARRANGEMENT WITH POWER TROLLEY

## TECHNICAL SPECIFICATION

<b>Capacity</b>	<b>Tonnes</b>	<b>0.5</b>	<b>1</b>	<b>2</b>	<b>3</b>	<b>5</b>	<b>7.5</b>	<b>10</b>	<b>15</b>
Height of Lift	Mtr.	6	6	6	6	6	6	6	6
No. of Falls		2	2	2	2	4	4	4	4
Wire Rope Dia.	mm	6	8	10	12	12	14	16	20
Hoisting Speed	m/min.	5	5	4.5	4.5	4	4	4	3.5
C.T. Speed	m/min.	15	15	15	15	12	12	12	12
Hoisting Motor	hp	1	1.5	2	3	5	7.5	12.5	15
C.T. Motor	hp	0.25	0.25	0.5	0.5	1	1	1	1.5

## DIMENSION

A	mm	600	650	750	750	1050	1050	1050	1350
B	mm	450	450	600	600	800	800	800	1000
C	mm	350	350	400	400	600	650	700	700
D	mm	300	350	400	400	550	600	650	650
J	mm	300	350	350	350	425	425	452	500
Weight (Aprox.)	kg	300	320	375	400	600	650	725	1250